

C- Stores • Wine & Spirits • Electronics • Sporting Goods • Office Buildings • Super Markets

SmartMat™ Hidden Shoplifting Security

Shoplifters Won't Return When Turbo Tags Alarm 10' Before Exiting



Shoplifters are Identified when Turbo Tags Alarm at 105 Decibels

Alarming Detection: 8' Wide - 6' High - 10' Before Exiting - Audible 600' Into Parking Lot



“A New and Pleasant Shopping Experience for our Guests”

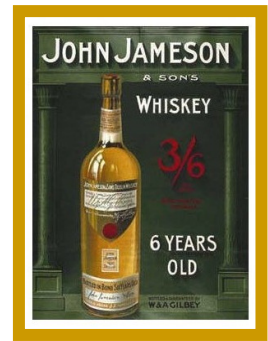
Callas Enterprises, LLC

Mike T. Callas (612) 750 - 8505 mike@callasent.com

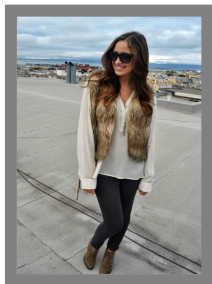
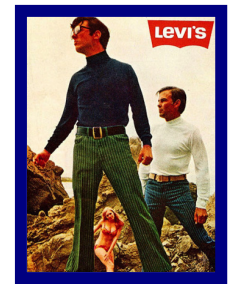
SmartMat™ - SmartGuard™ - AdMate™ - SpotLite™ are Patented Solutions of Callas Enterprises

SmartGuard Poster Ad Revenue Security

Operating System: 8.2 MHz RF TX - 5 Year Field Trial Testing



Installs in Minutes - No Tools - No Service Contracts



Guest Friendly - No Selling Space - Simply Hang on Wall



Changeable Poster



SkyGuard Poster Revenue Security Custom Sizes Available



Turbo Tags are Audible 600' into the Parking Lot



Advertise Brands



Turbo Alarms Hidden Articles In:

Backpacks • Purses • Coats • Pants • Strollers • Carts



SkyGuard - SmartGuard Offer Changeable Poster Advertising Revenue



Tag Detacher



One Size Turbo Tag fits all Wine & Spirit Bottles



Displayed Electronics



Clicker On-Off



Boxes Electronics



Apparel



Shoes - Purses - Bikes

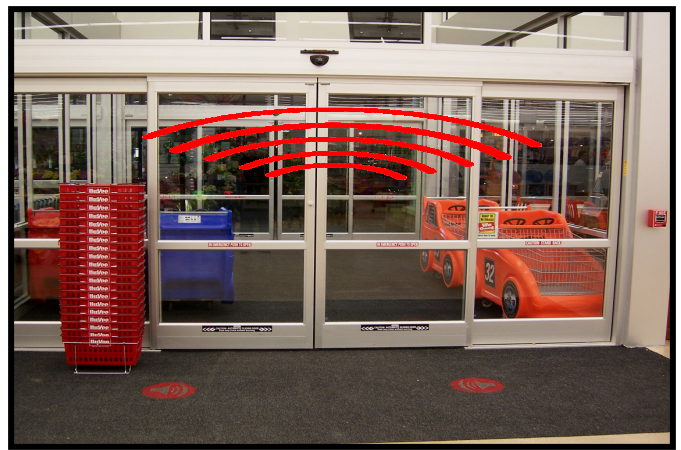


TV's & Boxes



“Restrooms are the Shoplifters Office”

SmartMat™ Secures Restrooms



Hy-Vee Alarms: 6’ High - 8’ Wide - 10’ Before Exiting



Kohl’s before SmartMat™ EAS Pedestal Towers



Kohl’s: Pleasant Guest Shopping Experience



SmartMat™ Testimonials
India

Hi Mike,

We did test the equipment's which you had send and the performance is found to be good with 30 Custom Installs sold and would be pushing the same in other markets soon. Kindly note, if the installation is successful we are expecting another 30 stores to be installed and another 30 before March or 90 total stores.

Dharmish Lamba, India

Australia

Hi Mike,

We are finalizing a trial with an IGA store part of a 500+ strong Franchise retail group. The 2V adjustable detection was very close, approx. from the antenna with our Alpha, but around 1 meter with your product tags. The 14V system tested well, within of our Alpha at around 2-3 meters and your product around 4-5 meters

Nick Trudgett, General Manager, (AUS/NZ) Australia - New Zealand

New Zealand

Hi Mike,

We had emptied everything in the core roll. Everything received in good order. Had also tested all the turbo tags and bottle tags, all work well. Thank you again.

Marcus Seen, Australia - New Zealand

Singapore

Hi Mike,

We have tested the equipment and it works as stated. In addition, your tags have a higher detection than all of our Alpha tags tested. Simple install well noted.

Ben Chua, Singapore

Europe

Hi Mike,

The new SmartMat and SmartGuard Systems perform very well. We are pleased with the simple install and alarming tag detection performance at 3m – 4 meters. Thanks a lot!

Best regards,

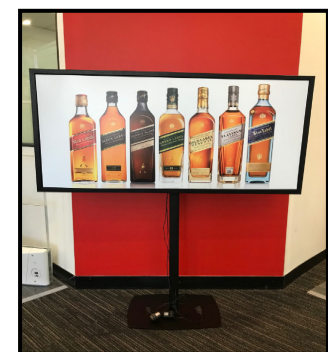
Jordi Satorras, Barcelona, Spain



Checkpoint Controller Adjustable Detection



SmartMat at Retail



Checkpoint SmartGuard™